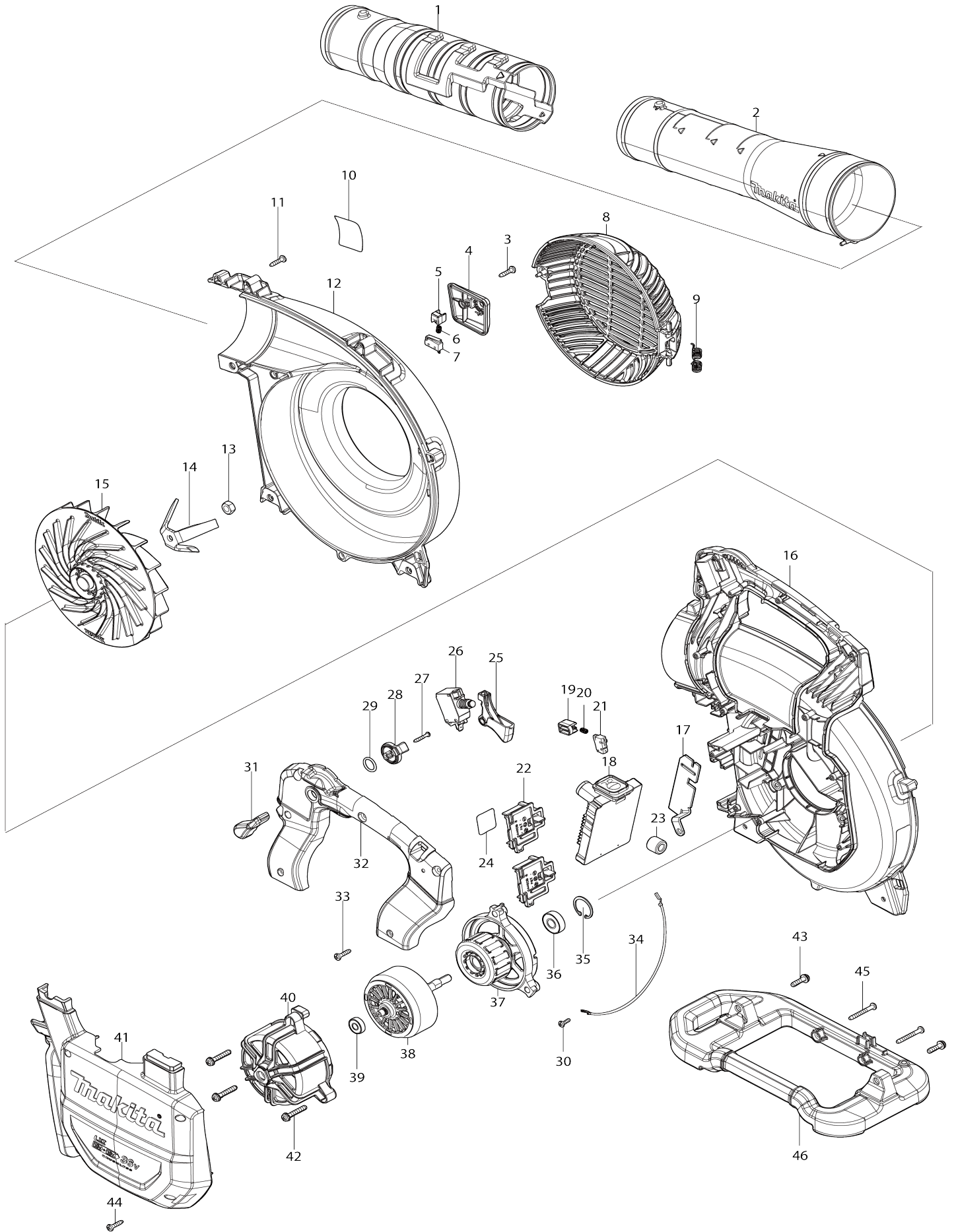
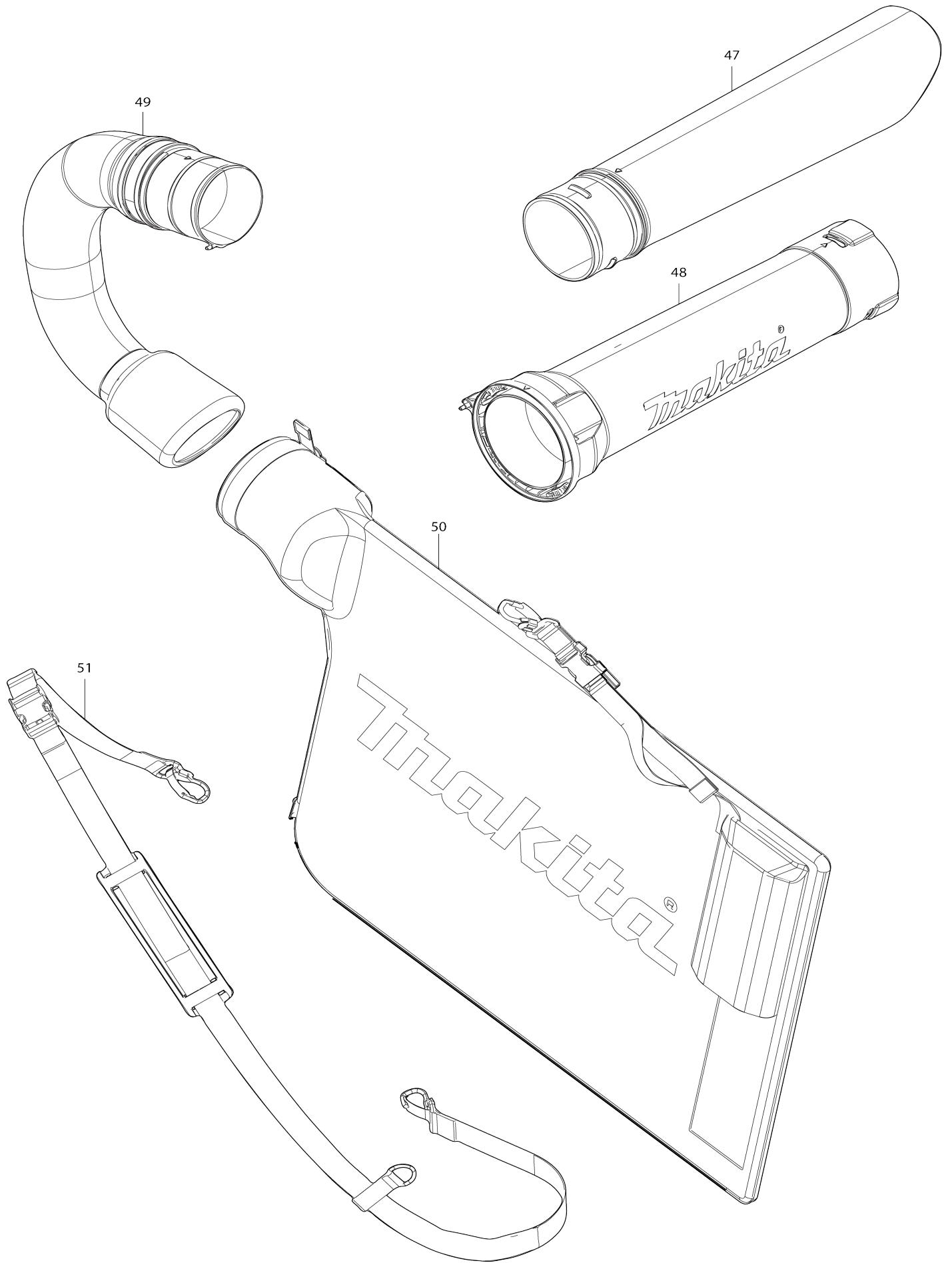


Model No.DUB363 CORDLESS BLOWER



Model No.DUB363 CORDLESS BLOWER



Model No.DUB363 CORDLESS BLOWER

Item No.	Parts No.	Description	Interchangability	Q'ty	New/Old	Note1	Note2
001	459798-0	END NOZZLE 72		1	*		
001-1	183R01-2	END NOZZLE 72 SET	O	1			
002	127501-4	PIPE 90-72 ASSEMBLY		1	*		
C10	265A67-3	H.S.H.SHOULDER BOLT M5X38		1	*		
002-1	183R06-2	PIPE 90-72 ASSEMBLY SET	O	1			
C10	265A67-3	H.S.H.SHOULDER BOLT M5X38		1			
003	266326-2	TAPPING SCREW 4X18		1			
004	459790-6	SWITCH COVER		1			
005	459793-0	PUSHER A		1			
006	233118-4	COMPRESSION SPRING 4		1			
007	632L94-5	SWITCH UNIT		1			
008	127424-6	FAN COVER ASSEMBLY		1			
C10	265A66-5	H.S.H.SHOULDER BOLT M5X32		1			
009	232600-0	TORSION SPRING 8		1			
010	856S45-8	DUB363 NAME PLATE		1			
011	266326-2	TAPPING SCREW 4X18		6			
012	459784-1	VOLUTE CASE R		1			
013	252154-1	HEX. NUT M8-13		1			
014	347570-1	SHREDDER		1			
015	240204-4	FAN 180		1			
016	140S59-0	VOLUTE CASE L COMPLETE		1	*		
C10	8011Y4-4	CAUTION LABEL		1	*		
016-1	141R96-1	VOLUTE CASE L COMPLETE	<	1	*		
C10	8011Y4-4	CAUTION LABEL		1	*		
016-2	141U48-0	VOLUTE CASE L COMPLETE	<	1			
C10	8011Y4-4	CAUTION LABEL		1			
C20	8072S8-8	CAUTION LABEL		1			
017	347718-5	EARTH PLATE		1			
018	140S58-2	CONTROLLER COMPLETE		1			
C10	8007N9-0	SWITCH LABEL		1			
019	459794-8	PUSHER B		1			
020	233118-4	COMPRESSION SPRING 4		1			
021	632L94-5	SWITCH UNIT		1			
022	644809-6	TERMINAL		2			
023	688163-8	LINE FILTER		1			
024	856S53-9	DUB363 SERIAL NO. LABEL		1			
025	459791-4	SWITCH LEVER		1			
026	651438-8	SWITCH C3JW-6B-PAN		1			
027	266127-8	+ TAPPING SCREW PT 3X20		1			
028	459698-4	LINK		1			
029	213154-6	O RING 14		1			
030	652008-6	PAN HEAD SCREW M3.5X7		1			
031	459792-2	CONTROL LEVER		1			
032	459788-3	GRIP L		1			
033	266326-2	TAPPING SCREW 4X18		6			
034	632P80-0	LEAD UNIT		1			
035	962105-3	RETAINING RING R-26		1			

036	210059-1	BALL BEARING 6000DDW		1		
037	629473-4	STATOR COMPLETE		1		
038	619609-3	ROTOR		1		
039	210017-7	BALL BEARING 607DDW		1		
040	459789-1	MOTOR HOUSING		1		
041	140N74-4	MOTOR COVER COMPLETE		1		
C10	263005-3	RUBBER PIN 6		4		
042	911253-5	PAN HEAD SCREW M5X30		3		
043	911233-1	PAN HEAD SCREW M5X20		2		
044	266326-2	TAPPING SCREW 4X18		7		
045	266351-3	TAPPING SCREW 4X35		2		
046	459787-5	SUB HANDLE		1	*	
046-1	413738-2	SUB HANDLE	<	1		
047	459800-9	VACUUM PIPE B		1	*	
047-1	183R08-8	VACUUM PIPE B SET	O	1		
048	127425-4	VACUUM PIPE A ASSEMBLY		1	*	
C10	265A66-5	H.S.H.SHOULDER BOLT M5X32		1	*	
048-1	183R04-6	VACUUM PIPE A ASSEMBLY SET	O	1		
C10	265A66-5	H.S.H.SHOULDER BOLT M5X32		1		
049	127502-2	BENT PIPE 90 ASSMBLY		1		
C10	265A67-3	H.S.H.SHOULDER BOLT M5X38		1		
050	162697-4	DUST BAG		1	*	
050-1	162988-3	DUST BAG	O	1		
051	162698-2	BAND 30 COMPLETE		1		
A01	783202-0	HEX. WRENCH 4		1		
A05	456958-5	FLAT NOZZLE		1	*	
A05-1	183P98-9	FLAT NOZZLE SET	O	1		
E01	807950-8	SOUND 95DB LABEL		1		
F01-1	191P37-5	VACUUM KIT SET	O	1		
F02	197888-8	EXTENSION NOZZLE SET		1		
F03	197889-6	FLAT NOZZLE SET		1		
F04	191P40-6	DUST BAG SET		1		
F05	191J13-3	ADAPTER PIPE 71 SET		1		
F06	191B03-8	GUTTER NOZZLE SET		1		
C10	459816-4	EXTENSION PIPE 72		3		
C20	162790-4	END NOZZLE COMPLETE		1		
C30	281030-2	HOSE CLAMP 75-90		2		
C40	281031-0	HOSE CLAMP 85-100		1		
A03	***DC18RD	DC18RD TWO PORT FAST CHARGER		1		
D10		COMPO-PARTS				
A04	197422-4	BATTERY BL1860B SET		2		
A07	450128-8	BATTERY COVER		2		
A04	197280-8	BATTERY BL1850B SET		2		

Please state Parts No. when your order.

Print Date 17/10/2023