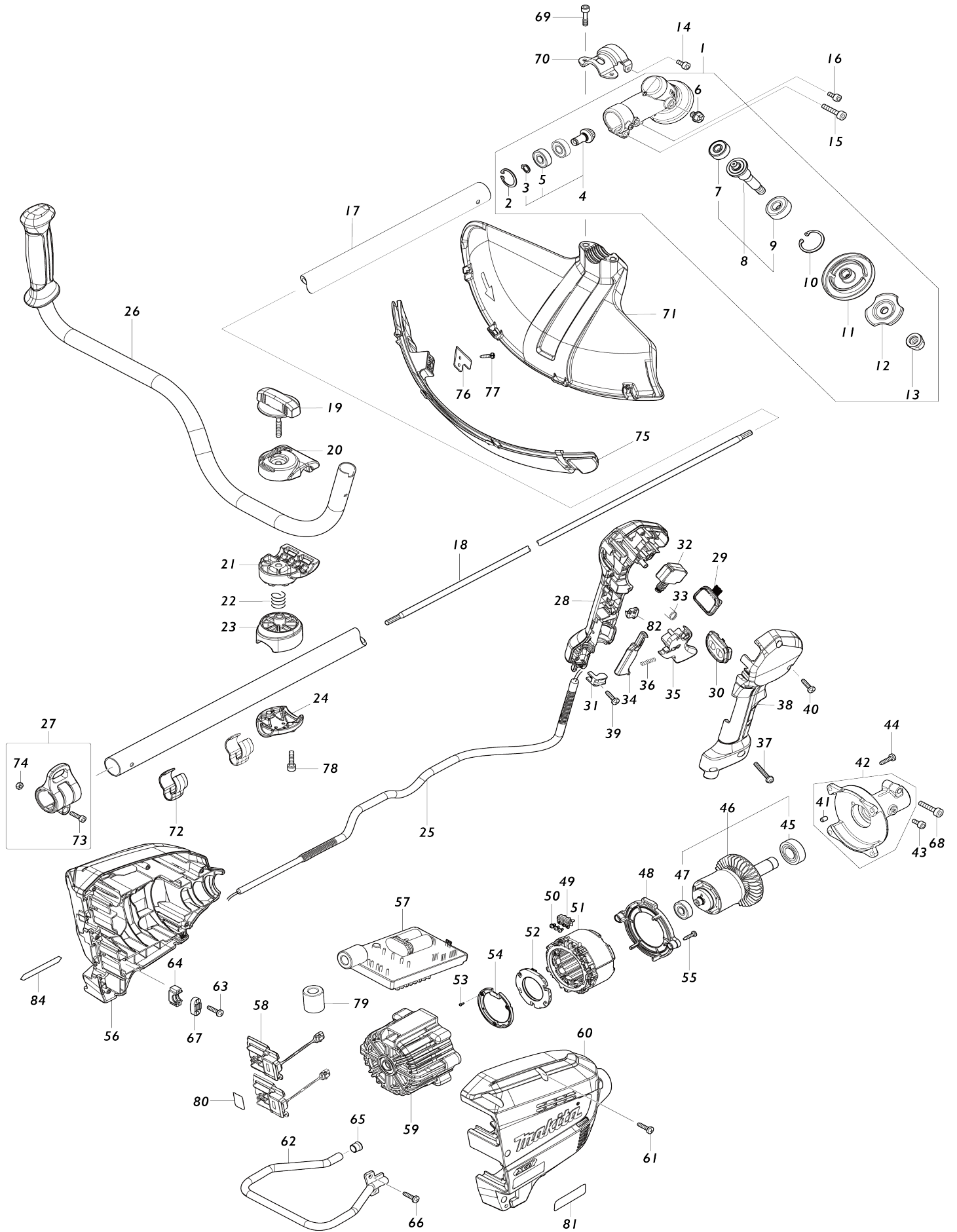


Model No.UR012G CORDLESS GRASS TRIMMER



Model No.UR012G CORDLESS GRASS TRIMMER

Item No.	Parts No.	Description	Interchangability	Q'ty	New/Old	Note1	Note2
001	127238-3	GEAR CASE ASSEMBLY G		1			
D10		INC. 2,4,6,8,10-13					
002	257470-6	RETAINING RING (INT) R-26		1			
003	257471-4	RETAINING RING (EXT) S-10		1			
004	136564-9	SPIRAL BEVEL GEAR 13 ASS'Y		1			
D10		INC. 3,5					
005	210067-2	BALL BEARING 6000ZZ		2			
006	265590-2	+HEX.BOLT M8X10 WITH R		1			
007	210084-2	BALL BEARING 629ZZ		1			
008	136565-7	CUTTER SHAFT G ASS'Y		1			
D10		INC. 7,9					
009	211137-0	BALL BEARING 6201LLU		1			
010	257469-1	RETAINING RING (INT) R-32		1			
011	140J59-6	RECEIVE WASHER COMPLETE G		1			
012	162567-7	CLAMP WASHER COMPLETE G		1			
013	252236-9	HEX. LOCK NUT M10-17		1			
014	922211-6	H.S.H.BOLT M5X12 WITH W		1			
015	922353-6	HEX.SOCKET HEAD BOLT M6X30		1			
016	922211-6	H.S.H.BOLT M5X12 WITH W		1			
017	141D74-7	SHAFT PIPE COMPLETE A		1			
C10	819312-8	MAKITA LOGO LABEL		1			
C20	8040V7-0	CAUTION LABEL		1			
018	327845-4	SHAFT		1			
019	168796-0	KNOB 57		1			
020	144313-0	UPPER HANDLE HOLDER COMPLETE		1			
C10	263005-3	RUBBER PIN 6		1			
021	319517-5	LOWER HANDLE HOLDER		1			
022	233309-7	COMPRESSION SPRING 17		1			
023	319799-9	PIPE HOLDER		1			
024	318422-3	PIPE CLAMP		1			
025	699171-4	POWER SUPPLY CORD UNIT		1			
026	140J61-9	HANDLE 22 COMPLETE		1			
C10	273014-4	GRIP 36		1			
027	125558-9	HANGER ASSEMBLY		1			
D10		INC. 73,74					
028	183T68-2	GRIP SET		1			
C10	252180-0	HEX. LOCK NUT M5-8		1			
D10		INC. 38					
029	141D25-0	INDICATION CIRCUIT COMPLETE		1			
030	140W06-5	SWITCH CIRCUIT COMPLETE G		1			
C10	819J26-9	SWITCH LABEL		1			
031	687260-7	STRAIN RELIEF		1			
032	651492-2	SWITCH C3JR-1A-PAXD3		1			
033	233540-5	TORSION SPRING 11		1			
034	459146-3	LOCK OFF LEVER		1			
035	459145-5	SWITCH LEVER		1			

036	233101-1	COMPRESSION SPRING 4		1		
037	911258-5	PAN HEAD SCREW M5X35		1		
038	183T68-2	GRIP SET		1		
C10	252180-0	HEX. LOCK NUT M5-8		1		
D10		INC. 28				
039	266326-2	TAPPING SCREW 4X18		1		
040	266326-2	TAPPING SCREW 4X18		5		
041	263005-3	RUBBER PIN 6		1		
042	136465-1	PIPE BRACKET ASSEMBLY		1		
D10		INC. 41				
043	922211-6	H.S.H.BOLT M5X12 WITH W		1		
044	266420-0	TAPPING SCREW 5X20		4		
045	211275-8	BALL BEARING 6003DDW		1		
046	519560-6	ROTOR ASS'Y		1	*	
D10		IMC. 45,47				
046-1	519560-6	ROTOR ASS'Y	O	1	*	
D10		IMC. 45,47				
046-2	519560-6	ROTOR ASS'Y	O	1		
D10		IMC. 45,47				
047	210059-1	BALL BEARING 6000DDW		1		
048	459144-7	BAFFLE PLATE		1		
049	632T09-0	LEAD UNIT		1		
050	652031-1	PAN HEAD SCREW M3X6		3		
051	629A82-5	STATOR		1		
052	620F36-5	CONTROLLER B		1		
053	266490-9	TAPPING SCREW PT 2X6		3		
054	687B69-9	STOPPER		1		
055	266326-2	TAPPING SCREW 4X18		2		
056	183T69-0	HOUSING SET		1		
C10	263005-3	RUBBER PIN 6		4		
D10		INC. 60				
057	620F33-1	CONTROLLER		1	*	
057-1	632V71-7	CONTROLLER UNIT	<	1		
058	632P49-4	TERMINAL UNIT		2		
059	459143-9	MOTOR HOUSING		1		
060	183T69-0	HOUSING SET		1		
C10	263005-3	RUBBER PIN 6		4		
D10		INC. 56				
061	266326-2	TAPPING SCREW 4X18		6		
062	347846-6	BATTERY GUARD		1	*	
062-1	327A49-4	BATTERY GUARD	<	1		
063	266326-2	TAPPING SCREW 4X18		2		
064	687051-6	STRAIN RELIEF		1		
065	422230-7	CAP		1		
066	266420-0	TAPPING SCREW 5X20		2		
067	687052-4	STRAIN RELIEF		1		
068	922353-6	HEX.SOCKET HEAD BOLT M6X30		1		
069	266280-0	HEX. SOCKET HEAD BOLT M6X25		2		
070	347494-1	PROTECTOR CLAMP28		1		
071	459147-1	PROTECTOR 480		1		
072	455588-9	WIRE CLAMP		2		
073	266698-5	HEX. SOCKET HEAD BOLT M5X20		1		

074	264086-0	HEX.NUT M5		1		
075	141D72-1	PROTECTOR EXT. 480 COMPLETE		1		
076	347493-3	CUTTER		1		
077	266326-2	TAPPING SCREW 4X18		2		
078	922341-3	HEX. SOCKET HEAD BOLT M6X25		2		
079	688140-0	LINE FILTER		1		
080	811X20-1	UR012G SERIAL NO. LABEL		1		
081	811X59-4	UR012G NAME PLATE		1		
082	632G61-0	SWITCH UNIT		1		
084	8040V4-6	XGT LOGO LABEL		1		
A01	122A37-4	BAND ASSEMBLY		1		
A03	195624-6	CUTTER BLADE 305 SET		1	*	
A03-1	195624-6	CUTTER BLADE 305 SET	O	1		
A05	782238-6	BOX WRENCH 17		1		
A06	783202-0	HEX. WRENCH 4		1		
A07	783217-7	HEX. WRENCH 5		1		
A08	831304-7	ACCESSORY BAG		1		
A09	199884-2	TRIMMER HEAD 105-M10L SET M G		1		
A10	199868-0	PLASTIC BLADE 305 SET MG		1		
C10	140J62-7	BLADE BASE COMPLETE		1		
C20	326958-8	HOLDER M10L		1		
C30	459154-4	BLADE BASE COVER		1		
C40	199870-3	PLASTIC BLADE 305 BLADE SET MG		1		
A11	422818-3	BLADE COVER		2		
E01	807949-3	SOUND 94DB LABEL		1		
F01	199868-0	PLASTIC BLADE 305 SET MG		1		
F02	199870-3	PLASTIC BLADE 305 BLADE SET MG		1		
F03	199873-7	PROTECTOR 225 SET MG		1		
F04	199875-3	PROTECTOR SET MG		1		
F09	199378-7	BAND ASSEMBLY SET		1		
A01	199378-7	BAND ASSEMBLY SET		1		
A09	1912N0-2	TRIMMER HEAD 96-M10L SET		1		

Please state Parts No. when your order.

Print Date 17/06/2024